



# GAME PLAN

## MINNESOTA LOTTERY

## LOVE AT FIRST SCRATCH

With Valentine's Day right around the corner, it's a good reminder that your customers are looking for something sweet, fun, and easy to give as a gift. Suggest that they pick up a Love Gnomes ticket to give to their loved ones. The love gnome fits right in with cards, candy, and flowers – plus there's no wrapping required! Seasonal scratch games feel special – promoting them early and often helps capture the attention of your customers and is an easy way to earn a few extra commissions. Here are some fun ways to encourage a purchase – test them out to share the love and excitement!

- If someone is purchasing a card or candy, ask “Want to add a fun surprise to that card?”
- Looking for a gift that's a gnome-brainer? Try Love Gnomes scratch game!
- Last-minute Valentine? We've got you!



## FAST PLAY SM

### PROGRESSIVE PRINT-N-PLAY™ IS NOW FAST PLAY™

The Minnesota Lottery is rebranding Progressive Print-N-Play to Fast Play. Fast Play will not only bring a new, modern look to this extended play category, but it will also provide some fun changes for your players to get excited about! Here are some initial details, but more detail will be provided in the March Game Plan and future POP kits.

- **Launch Date:** Fast Play is tentatively scheduled to launch at the end of March.
  - › Additional details will be provided as the project progresses.

- **Game Mix:** Fast Play will still include the popular Bingo, Crossword, and Slots games, but with an exciting new look. A new game called “X The Cash” is being added.
- **Progressive Jackpot:** The new starting jackpot will be \$50,000 instead of \$5,000!
  - › As it currently does, the progressive jackpot will continue to grow with each ticket sold.
- **Price Points:** There's a new cost per ticket/game. Four price points will be available: \$2, \$5, \$10, and \$20.



Forestland Sales, International Falls



Holiday #27465, Coon Rapids

How many retailers  
do we have?  
3,118



## NEW YEAR, NEW BONUSES

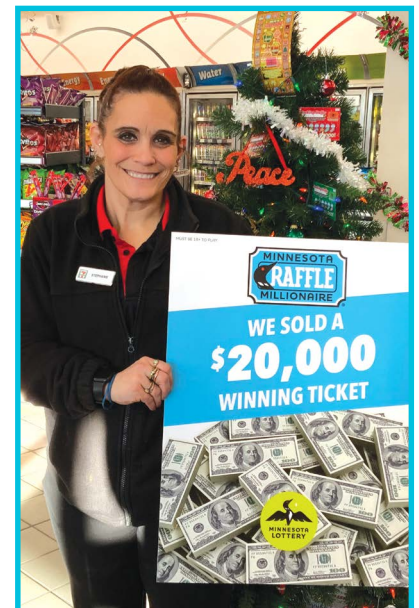
We welcomed the new year by announcing the winning numbers for the highly awaited Minnesota Millionaire Raffle. On New Year's Day, 20,000 winning numbers were announced, and news quickly spread about where the top prize-winning tickets were sold. Below are some pictures of our retailers receiving their bonus checks for selling some of the top Raffle prizes.



Kwik Trip #111, Oak Park Heights



Dayton Gas Stop, Dayton



Speedway, St. Peter #304873

# SCRATCH PACK INVENTORY

## HOW DO I TELL WHAT PACKS OF SCRATCH TICKETS I HAVE ACTIVE, OUT FOR SALE, IN BACKSTOCK AND ON THE WAY?

■ There are 2 separate reports that will provide a snapshot of all three. The first report can be taken directly from your lottery sales terminal. This report is called the Scratch Pack Inventory Report and can be obtained by selecting: REPORTS > SCRATCH GAMES > SCRATCH PACK INVENTORY > INVENTORY PACK REPORT > scroll or print the report.

■ This information can also be obtained by taking the Scratch Pack Inventory report online at the Retailer Services Portal.

## DEFINITION OF HOW PACKS ARE LISTED:



Active - Packs you have out for sale or are sold out and require settlement.



Delivered - Packs that have been confirmed at the store as received.



In transit - Packs that have been ordered and in route to your store.

Packs with an "\*" indicate the game has ended and need to be scheduled for a return to ensure you get credit.

It's important that you run and verify this information regularly to ensure all packs assigned to your store are accounted for.

\*\* Note: The terminal report provides real-time information, and the retailer service portal report is as of end of prior day.

If you have any questions related to inventory or reports, please contact Customer Support Services at 651-635-8273 or 888-568-8379.

NOT FOR SALE - REPORT ONLY

Minnesota Lottery

Scratch Pack Inventory Report  
Retailer: 301077  
07/09/22 10:16:33

GM	PACK	NAME	PRICE	#TIX	VALUE
697	024042	BAZING	\$3	100	\$300*
1860	004513	REDHOT	\$10	050	\$500
1875	000065	PREPLA	\$10	050	\$500
1876	000648	CASH	\$50	015	\$750
1880	000218	HOL500	\$5	100	\$500
1904	000070	FORTNE	\$20	025	\$500
2038	000248	CRICSH	\$3	100	\$300
2041	000072	OUTCSH	\$5	100	\$500
9905	000501	PDFST	\$20	025	\$500

009 PACKS ACTIVE SUBTOTAL \$4,350

GM	PACK	NAME	PRICE	#TIX	VALUE
1773	015000	ADAMSF	\$2	150	\$300*
1986	000011	CHVSLV	\$10	050	\$500
1997	000017	FUL500	\$5	100	\$500
1998	002010	2BUCK	\$2	150	\$300

004 PACKS CONFIRMED SUBTOTAL \$1,600

013 TOTAL ALL PACKS ABOVE \$5,950

## FULL PACKS ABOVE BY PRICE POINT

\$1 PACKS=0	\$2 PACKS=2	\$3 PACKS=0
\$5 PACKS=1	\$10 PACKS=1	\$20 PACKS=0
\$50 PACKS=0		

GM	PACK	NAME	PRICE	#TIX	VALUE
2000	000100	CASHHL	\$5	100	\$500
2000	001000	CASHHL	\$5	100	\$500
2000	001001	CASHHL	\$5	100	\$500
9905	001000	PDFST	\$20	025	\$500
9905	001001	PDFST	\$20	025	\$500

005 PACKS INTRANSIT SUBTOTAL \$2,500

\* = NEED TO SCHEDULE FOR RETURN

NOT FOR SALE - REPORT ONLY

# DETROIT LAKES OFFICE CLOSURE

Our regional office in Detroit Lakes has permanently closed, effective January 15, 2026. While players will no longer be able to cash in winning tickets in Detroit Lakes, they can come visit our offices in Virginia, Roseville, and Owatonna. Keep an eye out in upcoming Game Plan issues for details on future office plans.

# SCRATCH GAME SNAPSHOT

3 GAMES ARE LAUNCHING FEBRUARY 3RD SO  
GEAR UP FOR SOME FUN!



**Area Code Cash** / Ring, ring! A chance to win up to \$10,000 is on the line. Suggest players buy multiple tickets for their best chance to see their area code.



**Full of \$500s** / There's no shortage of \$500 prizes with this game – over \$2 million in fact. Full of \$500s, full of fun!



**\$10,000 Large** / Loaded with \$10,000 top prizes plus 5 bonus spots for a chance at quick cash. No need to go big when you can go \$10,000 Large!

## SNEAK PEEK: MARCH'S NEW SCRATCH GAMES

ON SALE MARCH 3, 2026

**Moola** / \$1  
Holy Cow! Win up to \$5,000.

**Outdoors & S'mores Crossword** / \$3  
\$30,000 top prize? No need to say s'more.

**Kayak Crossword** / \$5  
An oar-some game to paddle in up to \$100,000.

**Xtreme Cash** / \$10  
20 different games for a shot at \$200,000.



# WINTHROP AMOCO SCORES BIG!

After selling a \$100,000 top prize from a Wild Cash ticket, Winthrop Amoco posed with their bonus check of \$500. Well done and thanks for your hard work!



## EXPANDED SELECTION = EXPANDED OPPORTUNITIES

Did you know that the Minnesota Lottery offers more than just the 27 games included on your counter scratch display sticker every month? That's right! We offer an expanded selection of scratch games for your store to sell. Not only could it help increase your sales, but it also gives you more opportunities for a bonus if you sell a top prize. For example, the MSP Airport recently had a big \$200,000 winner on the Black Ice game which was offered as an additional scratch game and in doing so, received a bonus check of \$1,000.

While a lot of excitement is often focused on our new games, there are many players who love our older games and knowing that your store offers an expanded selection, could be a great way to get more foot traffic and repeat customers.

Interested in learning more? Talk to your lottery sales rep to see how you can start offering an expanded game selection so you can get in on the fun!

### HAVE A QUESTION? WE'RE HERE TO HELP.

*For help with accounting services, ticket status inquiries, ticket orders, point-of-purchase materials, lost or stolen tickets, mobile app, Retailer Service Portal and lottery equipment relocation/removals contact:*

#### **Lottery Customer Support**

651-635-8273

1-888-568-8379

Follow prompts.

Customer support staff are available Monday – Friday 8 a.m. – 4:30 p.m. Please leave a message during non-business hours. Calls regarding stolen tickets are answered 24/7/365 and handled quickly.

*For help with lottery equipment issues and lottery equipment communication issues contact:*

#### **Brightstar (IGT) Hotline**

1-888-487-9200

24 hours a day; 7 days a week

#### **Misprinted Ticket Reminder**

If you need to report a misprinted lotto ticket, call Customer Support at 651-635-8273 and follow prompts. If you leave a message, your call will be returned as soon as possible.

#### **Problem Gambling Helpline**

1-800-333-HOPE

Text HOPE to 53342

GetGamblingHelp.com

#### **Alternative Formats**

This publication is available in alternative formats to individuals with disabilities by calling 651-635-8273 or 888-568-8379.



Minnesota Lottery  
2645 Long Lake Road  
Roseville, Minnesota 55113  
mnlottery.com  
Liz Smith, Managing Editor  
Katie Hagen, Graphic Designer

## LOVE WHAT YOU'RE SEEING?

*Which retailer sold the most  
scratch tickets in 2025?*

**Orton's Moorhead  
Holiday**

*Which retailer sold the most  
lotto tickets in 2025?*

**Winners Corner**



We're giving our great retailers some love this month! Check inside for some fun tidbits about lottery retailers throughout the state. While you're at it, let us know how we're doing with content provided in the Game Plan! What questions can we help you with? Looking for more help on a specific retailer function? Want more selling tips? Let your sales representative know what types of topics would be helpful in future months so we can work hard for you and be your best match!